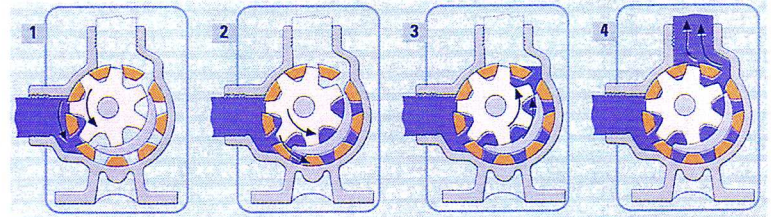


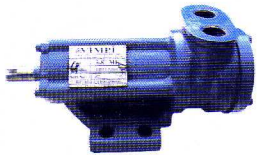


VIMPI
INTERNAL GEAR PUMPS
(General Purpose & Heavy Duty Pumps)

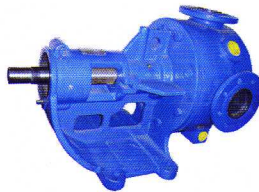
Internal Gear Pumps: Present the choice of preference at places up to max. 14 bars atmospheric pressure and for such viscous fluids as molasses, chocolate, asphalt, thick lubricants and even for such materials that need to be slightly crushed, due to their large pitches.



Operating Principle: The internal part consists of two gears and a crescent. While the rotor spins with the power supplied by the motor in the direction represented by the arrow, the idler (star) rotates and separates from the rotor (Fig 1). The space caused by separation of the two gears is filled up with fluid (Fig 2), the crescent and gears breaks apart from one another to let the flow of the fluid in through the space thereby created. The fluid is forced to the discharge (Fig 4) once the gears overlap again (Fig 3). Repeating the same cycle gives a continuous discharge.



3/8" MK (With Bracket)



3" BK (With Bracket)



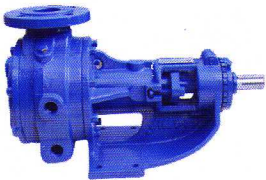
3" B (Relief Valve & Jacketed From Casing)



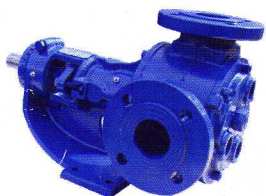
6" (53) AB (Heat Jacketed From Head)



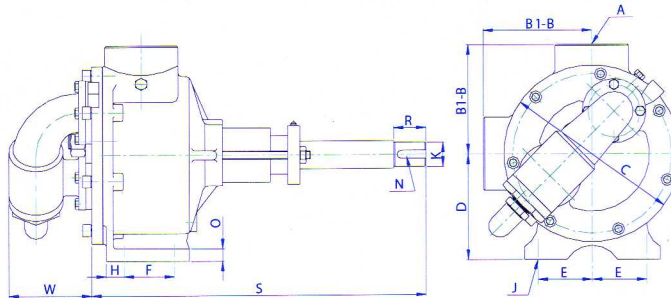
1" E (Heat Jacketed)



2" CAK (Flanged, With Bracket, Heat Jacketed Body)



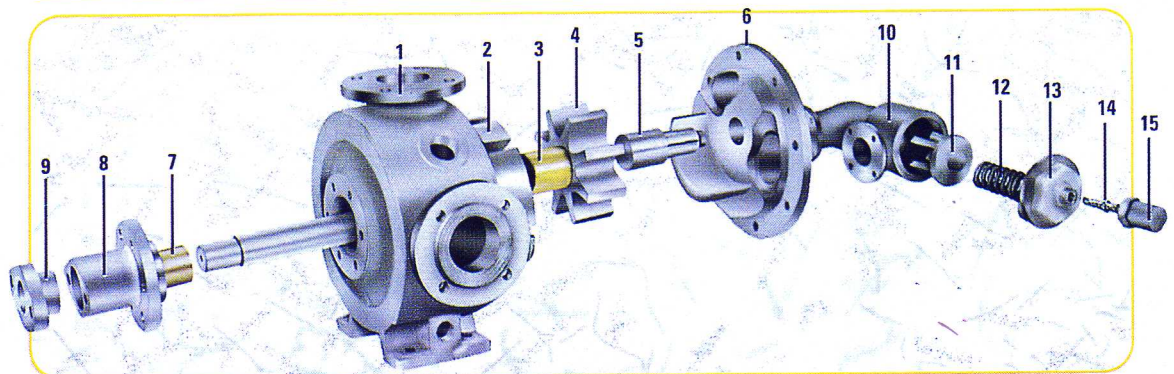
2 1/2" CK (Heat Jacketed From Head)



TYPES WITHOUT BRACKET

TYPE	A	B	B ₁	C	D	E	F	G	H	J	K	L	M	N	O	S	T	V	WEIGHT
RL	1/4"	--	42	48	41	27	--	--	34	8	12,7	--	--	8	55	164	--	--	2,5 KG
M	3/4"	--	42	68	33	--	--	--	--	--	12	--	4	--	140	--	--	--	2 KG
F-E	1"	74	--	124	74	41	32	--	23	10	18	--	--	6	8	32,5	230	58	7 KG
D	1 1/2"	78	--	124	80	54	40	--	35	11	25	--	--	8	12	40	348	58	12,6 KG
CA	2"	125	158	204	118	70	50	13	30	11	28	110	140	8	12	45	440	104	33 KG
CK	2 1/2"	160	190	260	155	80	74	14	32	15	35	130	160	10	18	45	500	110	40 KG
CB	2 1/2"	160	190	260	155	80	74	14	32	15	35	130	160	10	18	45	525	110	48 KG
B	3"	200	232	380	220	105	108	18	24	21	45	160	200	12	20	60	610	175	135 KG
AB	6"	245	270	440	250	125	157	23	60	17,5	55	240	285	16	20	70	770	--	210 KG

PART LIST WITHOUT BRACKET	
1	Casing
2	Rotor & Shaft
3	Idler Bush
4	Idler
5	Idler Pin
6	Head
7	Main Bushing
8	Stuffing Box
9	Packing Gland
10	Valve Body
11	Poppet
12	Valve Spring
13	Bonnet
14	Adjusting Screw
15	Valve Cap



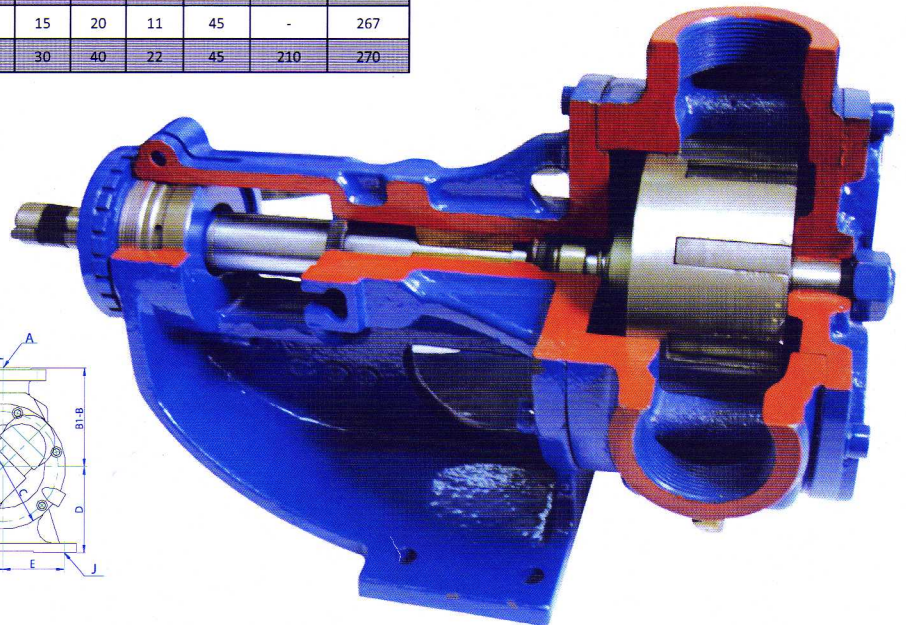
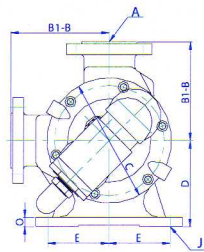
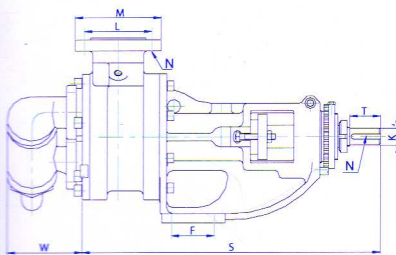


VIMPI
Viscous Liquid
PUMPS

INTERNAL GEAR PUMP CAPACITY CHART

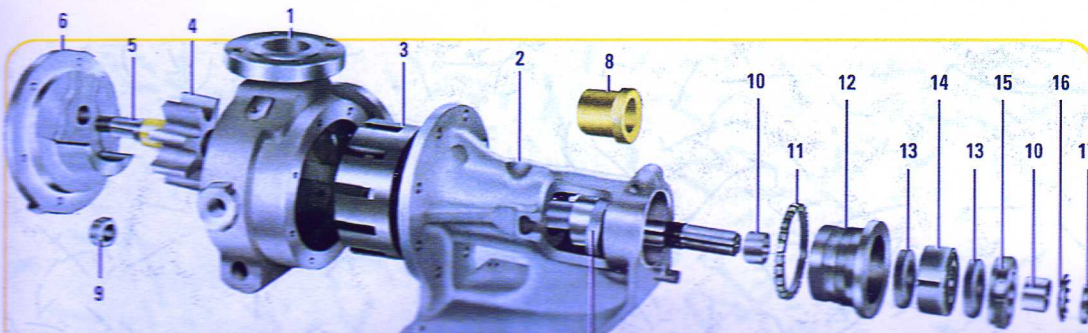
PUMP TYPE	INLET - OUTLET	MAX. PRESS. IN BAR	OUTDOORS			MOSTLY USED			POWER IN KW		WEIGHT IN KG	
			l/round	l/min	m ³ /h	RPM	KW	HP	MIN	MAX	With Bracket	Without Bracket
1/4" RL	1/4"	10	0.0011	1.65	0.1	1500	0.55	0.75	0.25	0.75	2.5	
3/8" M-MK	3/8"	6	0.004	5.83	0.35	1500	0.55	0.75	0.25	0.75	2	3
1" F-FK	1"	10	0.017	22.5	1.5	1500	1.1	1.5	0.55	1.1	7	13
1" E-EK	1"	10	0.022	33	2	1500	1.1	1.5	0.55	1.1	7	13
1 1/2" D-DC	1 1/2"	12	0.052	78	4.7	1500	1.1	1.5	0.75	3	-	18
2" CDK	2"	12	0.133	133	8	1000	4	5.5	1.5	7.5	-	42
2" CA-CAK	2"	14	0.44	200	12	450	5.5	7.5	3	7.5	33	54
2 1/2" C-CK	2 1/2"	14	0.85	375	22.5	450	7.5	10	4	11	40	90
2 1/2" CB-CbK	2 1/2"	14	1.45	580	35	400	11	15	5.5	15	48	97
3" CBK	3"	14	1.45	580	35	400	11	15	5.5	15	48	97
3" B-BK	3"	14	2.1	840	50	400	11	15	11	37	135	240
4" BK	4"	14	2.1	840	50	400	11	15	11	37	135	240
6" AK	6"	14	3.83	1530	92	400	15	20	11	45	-	267
6" AB-ABK	6"	14	5.17	1551	93	300	30	40	22	45	210	270

The bracket facilitates for transposition of pump inlets in eight different positions so as to provide ease for installation (with 45" ditch spacing). Each type of pump has its own set of screws and flanges for connection as well as series with relief valve and jacketed head and casing.



TYPES WITH BRACKET

TYPE	A	B	B ₁	C	D	E	F	J	K	L	M	N	O	S	T	V	W	kg
MK	3/4"	--	42	68	46	30	28	8,5	12	--	--	--	10	140	--	4	--	3 KG
FK-EK	1"	74	95	124	89	70	58	12	20	85	115	14	13	335	40	6	58	13 KG
DC	1 1/2"	78	103	124	89	70	58	12	20	110	150	18	13	370	40	6	58	18 KG
CDK	2"	--	125	160	120	100	70	13	27	125	165	18	15	470	60	8	65	42 KG
CAK	2"	130	158	205	140	100	70	13	27	125	165	18	15	510	60	8	105	54 KG
CK	2 1/2"	165	190	260	180	90	100	13	30	145	185	18	19	560	60	8	110	90 KG
CBK	2 1/2"	165	190	260	180	90	100	13	30	145	185	18	19	600	60	8	110	90 KG
CBK	3"	165	190	260	180	90	100	13	30	145	185	18	19	600	60	8	110	97 KG
BK	3"	196	232	380	262	178	208	22	45	160	200	18	32	835	80	14	170	240 KG
BK	4"	196	232	380	262	178	208	22	45	160	200	18	32	835	80	14	170	240 KG
AK	6"	229	--	390	297	105	102	19	45	240	285	M20	20	755	112	12	170	267 KG
ABK	6"	270	--	440	247	125	157	17,5	50	240	285	23	20	820	90	16	--	260 KG



PART LIST WITH BRACKET

1	Casing
2	Bracket
3	Rotor & Shaft
4	Idler
5	Idler Pin
6	Head
7	Packing Gland
8	Bracket Bushing
9	Idler Pin Nut
10	Steel Bush
11	Adjustment Ring
12	Adjustment Bearing Housing
13	Lip Seal
14	Ball Bearing
15	Lock Nut
16	Lock Washer
17	Shaft Nut